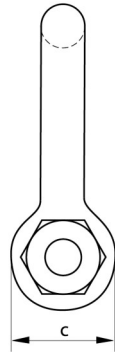
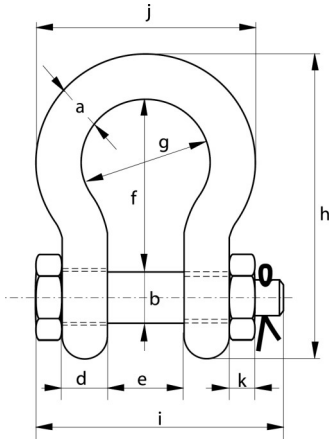




# Green Pin® Bow Shackle G-4163

with Safety Bolt



- Material** Bow and pin high tensile steel, Grade 6, quenched and tempered
- Safety Factor** MBL equals 6 x WLL
- Standard** EN 13889 and meets performance requirements of US Fed Spec. RR-C-271 Type IVA Class 2, Grade A from 2 t and upward these shackles comply with ASME B30.26
- Finish** Hot dipped galvanised
- Temp Range** -40°c up to +200°c
- Certification** As standard; EC Declaration of Conformity  
Upon request; 2.1, 2.2, 3.1, MTC<sup>a</sup>, CE, DNV 2.7-1 a\*, DNV 2.7-1 b\*, DNV 2.22 (\*from 2t upwards)

WLL	Diameter Bow	Diameter Pin	Diameter Eye	Width Eye	Width Inside	Length Inside	Width Bow	Length Inside	Length Bolt	Width	Thickness Nut	Product Code	Weight Each
t	a	b	c	d	e	f	g	h	i	j	k		kg
	mm	mm	mm	mm	mm	mm	mm	mm	mm	mm	mm		
0.5	7	8	16.5	7	12	29	20	48.5	42	34	4	12032A	0.06
0.75	9	10	20	9	13.5	32	22	56	50	40	5	12033A	0.11
1	10	11	22.5	10	17	36.5	26	63.5	60	46	8	12034A	0.16
1.5	11	13	26.5	11	19	43	29	74	67	51	11	12035A	0.22
2	13.5	16	34	13	22	51	32	89	82	58	13	12036A	0.42
3.25	16	19	40	16	27	64	43	110	98	75	17	12037A	0.74
4.75	19	22	46	19	31	76	51	129	114	89	19	12038A	1.18
6.5	22	25	52	22	36	83	58	144	130	102	22	12039A	1.77
8.5	25	28	59	25	43	95	68	164	150	118	25	12040A	2.58
9.5	28	32	66	28	47	108	75	185	166	131	27	12041A	3.66
12	32	35	72	32	51	115	83	201	178	147	30	12042A	4.91
13.5	35	38	80	35	57	133	92	227	197	162	33	12043A	6.54
17	38	42	88	38	60	146	99	249	202	175	19	12044A	8.19
25	45	50	103	45	74	178	126	300	249	216	23	12045A	14.22
35	50	57	111	50	83	197	138	331	269	238	26	12046A	19.53
42.5	57	65	130	57	95	222	160	377	301	274	29	12047A	28.33
55	65	70	145	65	105	260	180	433	330	310	32	12048A	39.59
85	75	83	162	73	127	329	190	527	380	340	39	12049A	62.00